



PP7FOS Series

Stainless Steel Housing for Sediment and Carbon Block Filtration

Designed for high flow water filtration applications

Atlas Filtri® PP7FOS are stainless steel, high flow filtration units for the reduction of sediment, chlorine taste and odor, various chemicals, and contaminants. The 316 stainless steel housings can incorporate string-wound or melt-blown filters for sediment filtration, as well as carbon block cartridges, depending upon the filtration requirements. The units will also accept melt-blown sediment filters that include scale reduction media.

The multi-cartridge housing is a complete line of 7-around models to accommodate a wide range of flow rates. Designed pressure of 150psi (10bar) at 300°F (149°C). Standard inlet and outlet connection are 2" MNPT. Standard finish is poly-coat over stainless. Standard gasket is FDA grade Buna-N.

Atlas Filtri offers a variety of filtration options that accommodate the housing requirements to meet your filtration needs in 2.5"x10", 20", 30", and 40" lengths.

- Melt Blown – grooved and non-grooved – gradient density option micron 1, 5, 25, 50 and 25-to-1, 25-to-5, 50-to-1
- String Wound – FDA Approved Option Micron 1, 5, 25, 50 and 100
- Carbon Block – CTO, VOC/Cyst, Lead VOC/Cyst, Chloramine VOC/Cyst

Atlas Filtri is driven to providing our customer with the best available products to meet specific filtration requirements. This is done by using the most advanced manufacturing and design methods. The international patents received come from a constant commitment to research and develop that result in new and innovative products.

Check out more about Atlas Filtri at us.atlasfiltri.com.



PP7FOS
Stainless Steel Housings

Features

- Designed for commercial and industrial filtration applications
- Heavy-duty stainless-steel construction
- Pipe fittings readily and easily accessible
- Knife-edge seal at both cartridge ends for a positive and seal eliminating by-pass
- Standard double open-ended cartridges
- Flange connections optional
- Accepts various types of sediment and carbon block filter from 10", 20", 30", 40" lengths

Specifications

Materials:

Housing Construction: 316L Stainless
Seal: FDA Grade Buna-N rubber

Working Conditions:

Working Temperature Range:
Min 39.2°F (4°C) – Max 177°F (80.6°C)

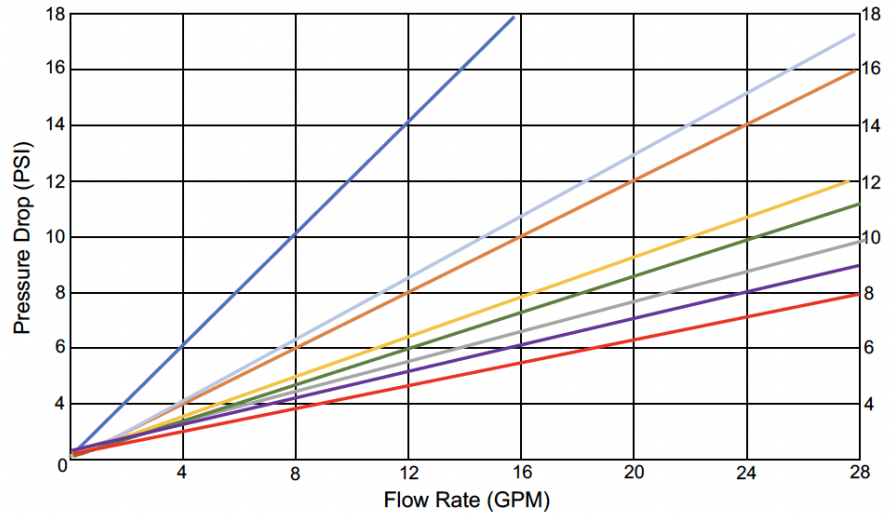
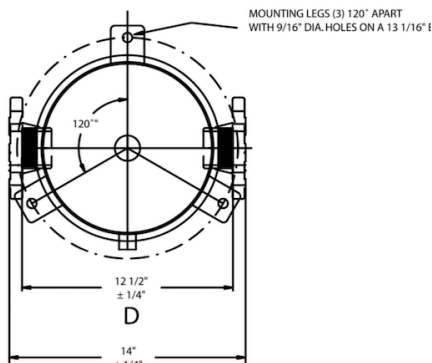
Media Temperature Range:

Max 220°F (104°C) in heated environment

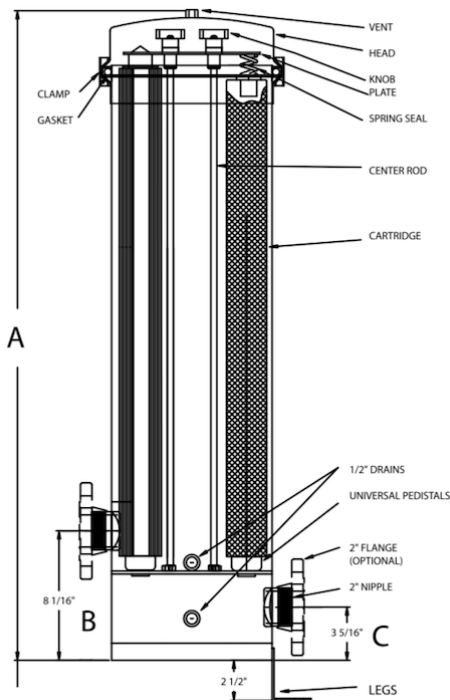
PRODUCT SPECIFICATION and PERFORMANCE

Listed PP7FOS housing models

Model	Quantity (Length) of Cartridge (1)	Flow Rate GPM (2)	Pipe Size	Drains	Max Cartridge Diameter	Shipping Weight Clamp	Box Size Clamp	Shipping Weight
PP7FOS1	7 Cart 10"	49	2" NPT	1/2" NPT	2 3/4" DD	40 lb	18x18x25	40 lb
PP7FOS2	7 Cart 20"	98	2" NPT	1/2" NPT	2 3/4" DD	51 lb	18x18x35	51 lb
PP7FOS3	7 Cart 30"	157	2" NPT	1/2" NPT	2 3/4" DD	60 lb	18x18x45	60 lb
PP7FOS4	7 Cart 40"	196	2" NPT	1/2" NPT	2 3/4" DD	70 lb	18x18x55	70 lb



2.5x10" - 5-Micron		2.5x30" - 5-Micron	
2.5x10" - 25-Micron		2.5x30" - 25-Micron	
2.5x20" - 5-Micron		2.5x40" - 5-Micron	
2.5x20" - 25-micron		2.5x40" - 25-micron	



Dimensions of Clamp Style Unit

Model Number	Height A	Inlet Center B	Outlet Center C	Flange Distance D
PP7FOS1	20 1/2"	8 1/16"	3 5/16"	12 1/2"
PP7FOS2	30 1/2"	8 1/16"	3 5/16"	12 1/2"
PP7FOS3	40 1/2"	8 1/16"	3 5/16"	12 1/2"
PP7FOS4	50 1/2"	8 1/16"	3 5/16"	12 1/2"

Atlas Filtri® is a registered trade mark of ATLAS FILTRI srl. Unauthorized use of the registered trade mark is prohibited. Images and context are the property of ATLAS FILTRI srl, which reserves the right to change product design and specification without prior notification.

Atlas Filtri North America LLC

1068 North Farms Road, Building 3, Wallingford, CT 06492, USA

Office +1 (203) 284-0080 - Fax +1 (203) 294-9226 – email: atlasfiltrinorthamerica@atlasfiltri.com

A Company of the Atlas Filtri Group. World headquarters and production facilities located in Italy.

