

Technical Data Sheet

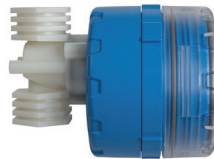
K-Matic Automatic Flush Valve

K-Matic part number RA7120050

- Flush rate: Up to 20 gallons per minute (dependent on inlet pressure and flow conditions)
- Maximum pressure rating: 125 psi
- Working temperature range: 39.2°F (4°C) to 113°F (45°C)

Manual or Programable Automatic

- Programable Opening Frequency:
 - 12 or 24 hours
 - 7-, 15- or 30-day cycles
- Duration of Flush Time
 - 10 or 20 Seconds
 - Automatic second flush 3 seconds
- Valve fitting size ½"
- Low Battery automatically closes the valve
- LED on face panel blinks 2-times for low battery
- 9 Volt Battery required



K-Matic part number RA7120050



Unscrew the clear cover and insert the 9-Volt battery. Once inserted the unit will come on.

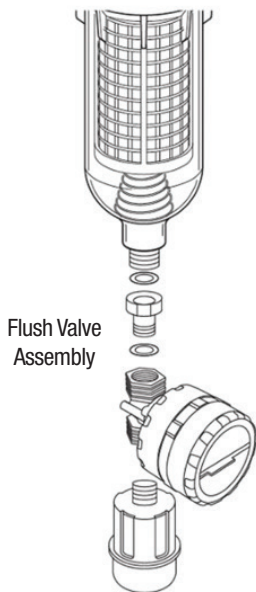
- Press the ▲ or ▼ to select the when the valve will open
- Once the desired time is selected press SET. This will default to 10 second flush time

- Press the ▲ or ▼ to select how long the flush time will be (10- or 20-seconds)
- Once the desired time is selected press the SET button for 5-seconds. This will save the data chosen

- If the process was completed correctly the Interval LED flashed and the 10- or 20-second flush time light will be lit

To screw the cover back on, lubricate the O-ring and then screw the glass cover back on the face of the unit to ensure that it is sealed

Additional manual flush available in instruction manual



Flush Valve Assembly



Typical Airgap Installation

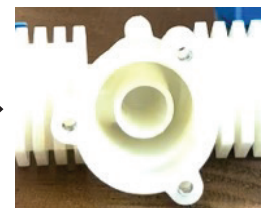


The solenoid pulls the piston down, which cause the diaphragm to allow debris to pass as large as a 1/4"



The diaphragm seals against the fitting by pressing against the edge

Flow Direction →



Check out all of Atlas Filtri's various solutions and kits to meet the application requirement for your filtration needs at atlasfiltri.com



Atlas Filtri® is a registered trade mark of ATLAS FILTRI srl. Unauthorized use of the registered trade mark is prohibited. Images and context are the property of ATLAS FILTRI srl, which reserves the right to change product design and specification without prior notification.

Atlas Filtri North America LLC
1068 North Farms Road, Building 3, Wallingford, CT 06492, USA
Office +1 (203) 284-0080 | email: atlasfiltrinorthamerica@atlasfiltri.com
A company of the Atlas Filtri Group, with headquarters and primary production in Italy, and an additional production site in the US.